

SANDLERSEATING

COM Configurator Swatch Upload Guidelines

Image Size & Ratio

To get the best results from the COM Configurator, images should be at least 512x512 and saved to the best possible quality.

For best results all image sizes should be sized using the 'Power of Two Rule'. This rule is something used in 3D applications to ensure textures correctly map onto objects.

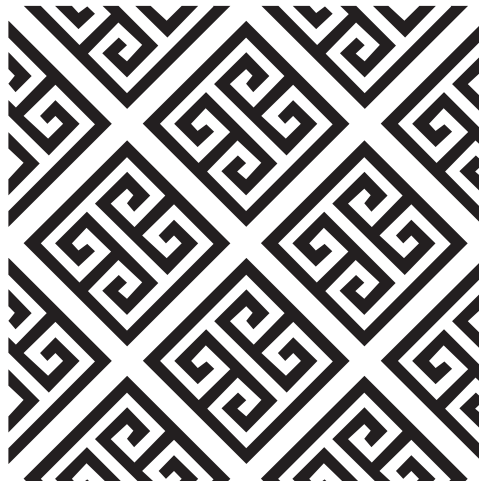
In technical terms this means the width/height is divisible by "8", and/or 2 and can be doubled-up or divided-down by "2".

For example - "8", "16", "32", "64", "128", "256", "512", "1024", "2048" etc.

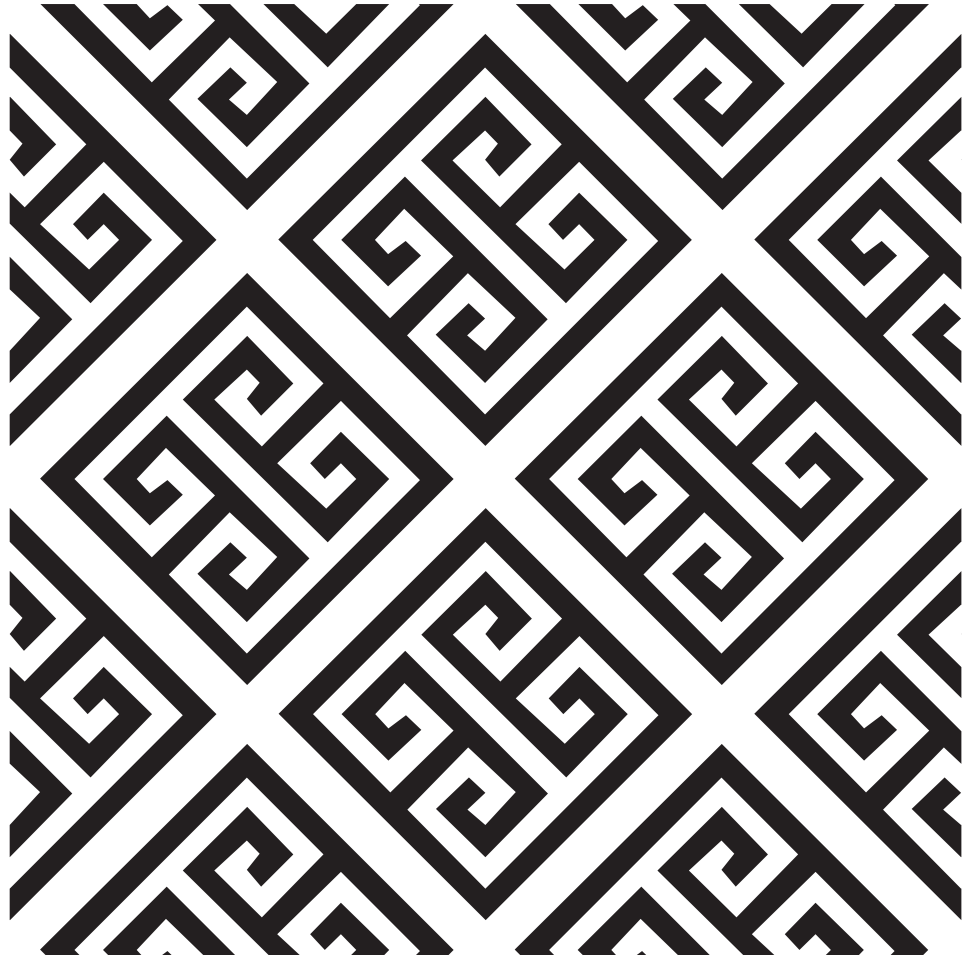
Other more random sizes will still work, but might not display properly on the models.



64



128



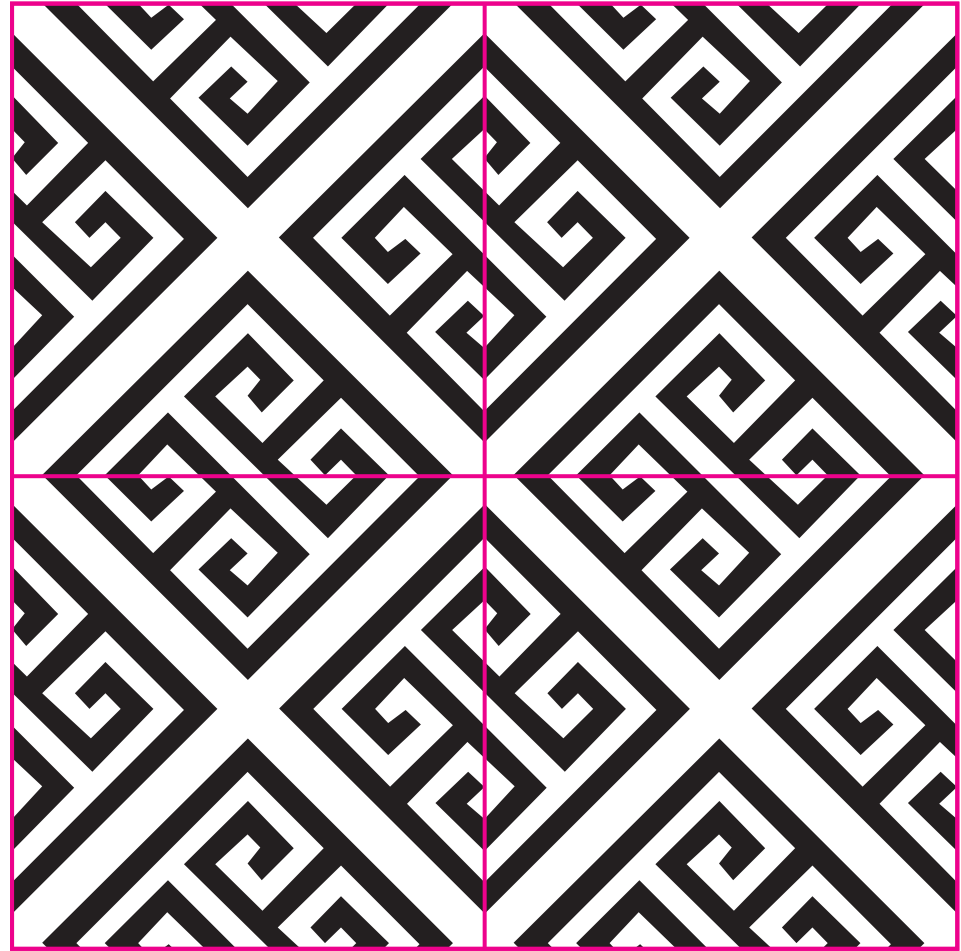
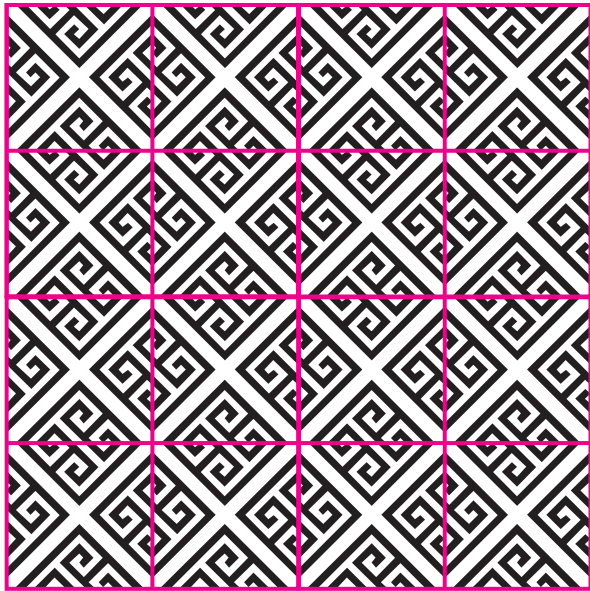
256

Repeatable Patterns

All patterns should be repeatable and seamless, otherwise materials applied to the COM Configurator will start to look unrealistic.

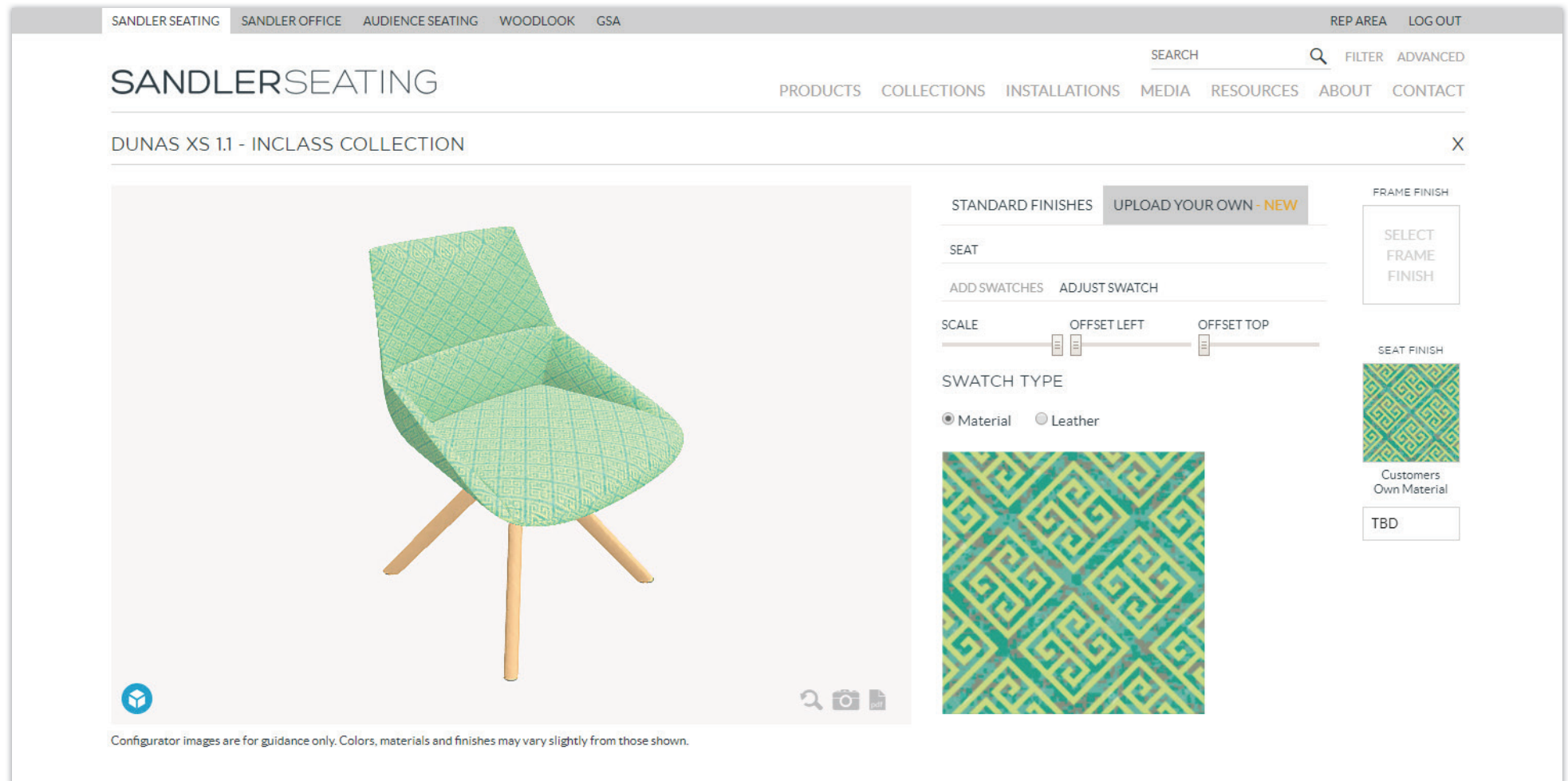
There are plenty of good guides on the internet / YouTube on how to create seamless repeatable patterns.

Seamless repeatable patterns are best designed in squares with elements that 'half drop' off to the top, left, right and bottom, as the visual example below shows.



Example of swatch uploaded to correct spec

The below image shows a swatch applied, which is high-res and the pattern is seamless and repeatable.



Example of swatch uploaded to correct spec

The below image shows a swatch applied, which is high-res and the pattern is seamless and repeatable.

